



Company Profile. 2026

Version 1.0

Al Aman: Engineering Contractors

Experienced Engineering
Contractors and Industrial
Manufacturers for Energy, MEP,
and Facility Management Projects.



www.alamancompany.com

Contents

03	About us History, Mission & Vision, Philosophy Company Structure & People	07	Products Al Aman Factory: Making the Impossible Possible
04	Field of Activity Services	08	Future Potential Turnkey Construction and Full-Service Contracting
05	Key Application: CHP Background Information, Headquarters Business Park, Riyadh Park	09	Certifications Certified Vendor
06	Services MEP, Facility Management, Construction	10	Key Suppliers & Clients Trusted Suppliers & Valued Clients

“The future
belongs to those
who **innovate**
today.”



About us



Introduction to Al Aman



Engineering Excellence in Saudi Arabia's Energy Sector

Al Aman Company was founded in Jeddah, Kingdom of Saudi Arabia in 2003 with the purpose of fulfilling a growing market demand for robust engineering solutions, which was primarily focused in the energy and electromechanical sectors.

Since then, Al Aman Company has significantly contributed to the growth of the Saudi market while amassing a broad catalog of diverse projects in the process.

From design to execution, all our engineering is carried out in-house, and we currently operate highly specialized teams with decades of field experience, that cover all the technical needs of any energy-related project. Our industrial division comprising a group of factories was subsequently founded with the purpose of supporting our projects' finer requirements and reducing delivery times, while adding further value to the local market.

Through acquiring various distinct partnerships, our portfolio has expanded steadily over the years along with our experience, allowing us to boldly venture into challenging waters of the future energy market.

Our Mission

To contribute to the development of the economic base of Saudi Arabia, promote welfare to the people through engineering innovation, and to maintain the highest standards and efficiency in the field.

Our Vision

To lead the energy market towards a green future and become the premier provider of innovative and advanced energy solutions, while satisfying client demand in the vast field of engineering.

A Timeline of our History

2003

Founded.
Initially founded as a partnership between Eng. Taher Tageldin & Mr. Hyo Sang Cho of Daewoo's power division.

2004

First EPC & O&M Project.
First energy project (EPC & O&M contract): Clorex power plant with Bechtel.

Began Manufacturing Generator Enclosures.
Started manufacturing generator soundproof & weatherproof enclosures.

2007

Started In-House Duct & Switchgear Production.
Started manufacturing ducts & switchgear on our own facilities.

2008

Began Manufacturing Steel Structures.
Started manufacturing steel structures.

2010

First HFO Medium-Speed Project (Al Khayyat).
First medium-speed project using HFO as fuel: Al Khayyat brick factory.

2011

Launched Construction Sub-Division.
Launched a new sub-division for construction projects.

2013

First CHP Project.
First CHP "Tri-generation" project: Headquarters Business Park, Jeddah.

2014

First Construction Project.
First construction project: Masharef Jeddah.

2016

Moved Industrial Division to new Factories.
Relocated our industrial division to the new company-owned multi-hangar factories in Modon, Jeddah.

2017

Second CHP Project.
Completed key project: Riyadh Park.

2019

Strategic Energy Project: Jeddah Islamic Port.
EPC power plant using medium-speed diesel generators.

2022

Key Manufacturing Project: Huawei Data Center Enclosures.
Custom high-spec steel enclosures housing diesel generators and auxiliaries, commissioned by Cummins.

2023

First Low Current Systems Project.
New activity within the MEP division under a private sector contract.

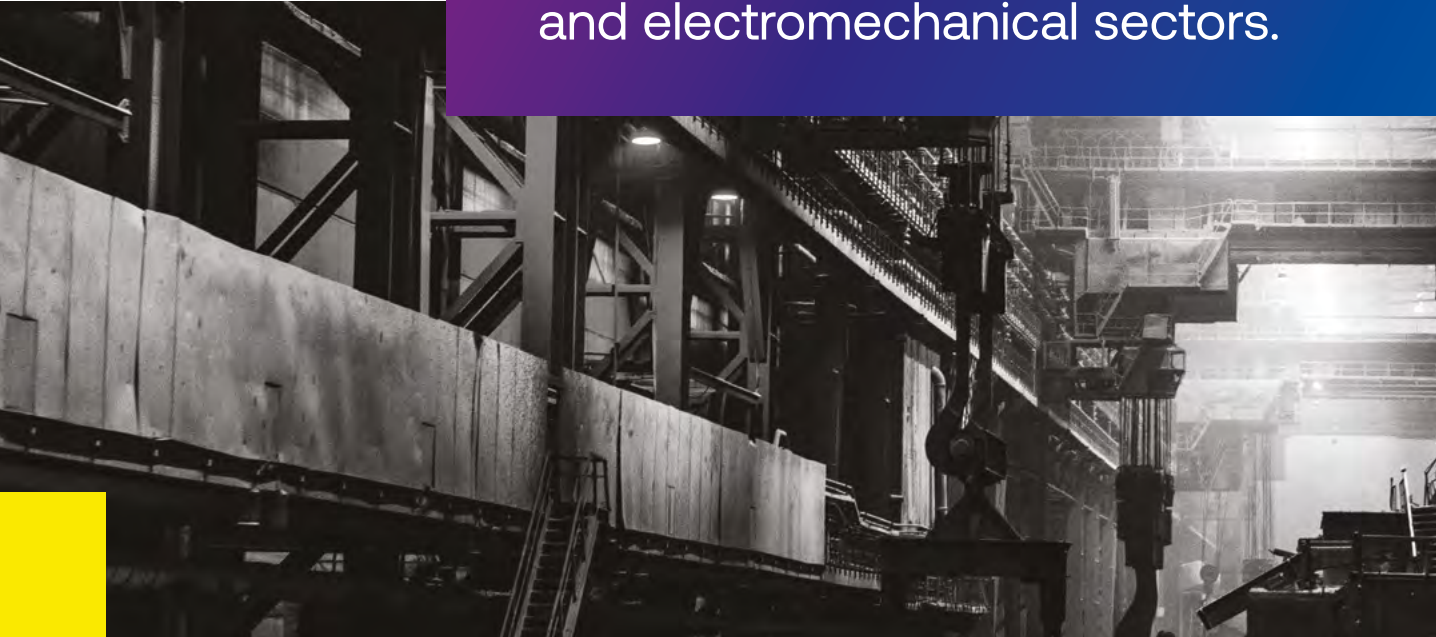
2024

Landed Key Governmental Projects.
2 key EPC contracts for infrastructure with the Saudi Water Authority.

2025

Classified Vendor Status with Strategic Authorities in Saudi Arabia.
Most notably the Public Investment Fund (PIF), Royal Commission for Riyadh City (RCRC) and Aramco.

Founded in 2003 in Jeddah, meeting the demand for engineering services in energy and electromechanical sectors.



Field Activity

Services

Our services cover all projects related to power generation, electrical and mechanical (MEP) works including infrastructure, and building services.

01

MEP

- Energy: Conventional, CHP, Renewable & Hybrid
- Electrical: Power and Low Current (LC)
- Mechanical: HVAC, Plumbing & Firefighting

02

Facility Management (FM)

- Hard FM: All MEP/ Electromechanical Service Scope.
- Soft FM: Waste Management, Landscaping & Upkeep.

03

Manufacturing

Our product catalog is suited for various industrial, residential and commercial applications.

- Enclosures
- Switchgear
- Generators
- Enclosure & Generator Auxiliaries
- Tanks
- Ducts
- Transport Trucks

“Fulfilling any type of contract including BOO (rental), BOOT, DBO, EPC Turnkey, Operation & Maintenance, and Design & Supply.”

Key Application: CHP

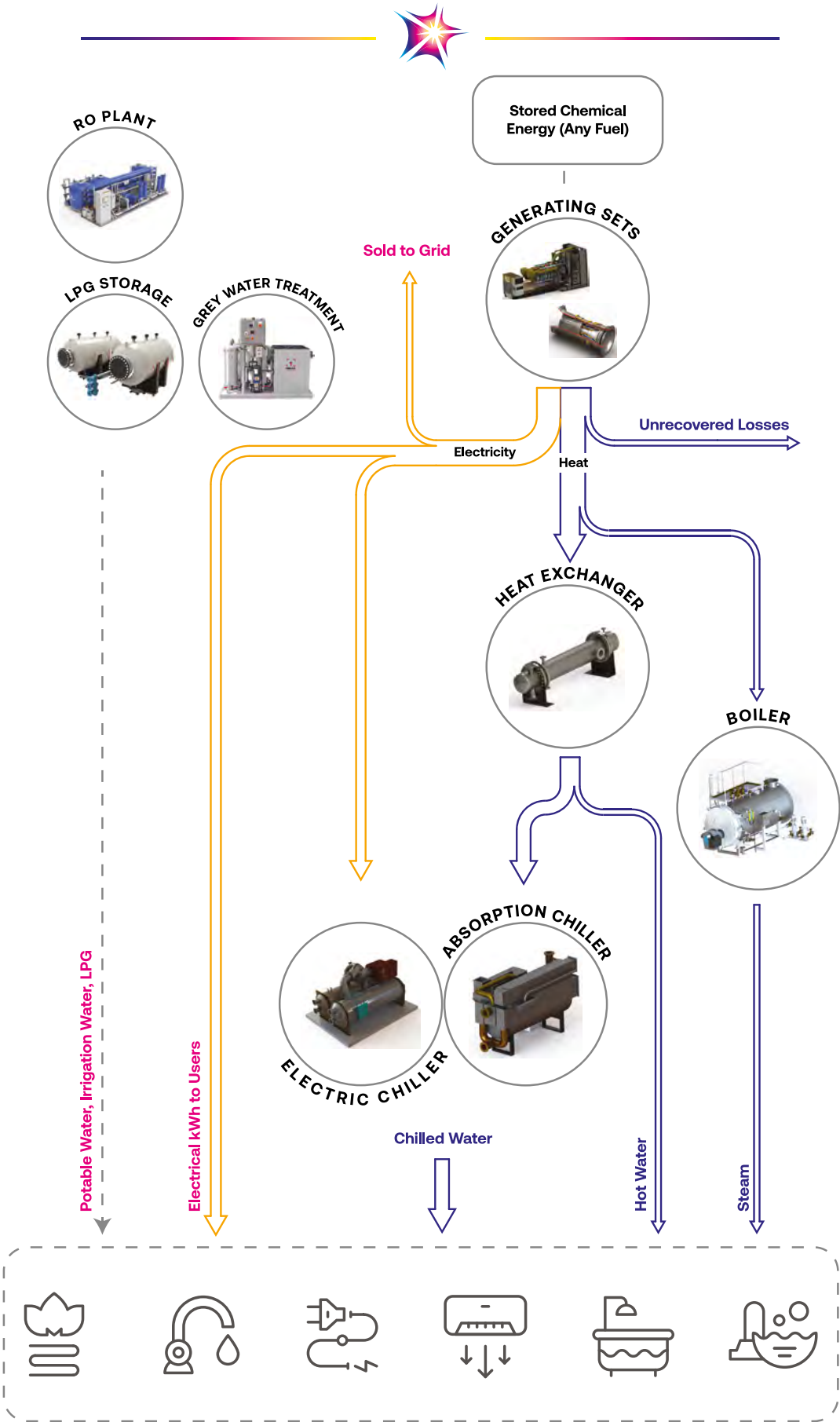
Background Information

Tri-generation is a process that utilizes the CHP (Combined Cooling, Heat and Power) cycle, which greatly impacts how traditional power plants are designed and built.

Electrical power is conventionally generated against substantial energy losses in the form of heat. Through the process of heat recovery, the dissipated energy can be repurposed for the production of various outputs, thus raising the efficiency by almost double and significantly increasing profitability.

	Conventional	Tri-Generation
Overall Efficiency	<45%	>80%
Useful Outputs	Electricity	<ul style="list-style-type: none">ElectricityChilled WaterHot WaterSteamCO2 (treated and used in carbonated drinks, chemical plants etc.)
Running Cost during Summer Time	High (due to lower efficiency and isolated cycle)	Low (due to higher efficiency and combined cycle)
Setup Process Variations	<ul style="list-style-type: none">Grid substationCabling & electric equipment	Heat exchangers, boilers & chillers
Environmental Responsibility	Considering the same volume of fuel burnt, Tri-Generation results in a significantly smaller carbon footprint.	
Stability	Tri-Generation offers security and independence in electrical supply.	

CCHP Application: Tri-Generation



Headquarters

Jeddah Business Park

Located on Jeddah’s corniche, this unique project was designed to stand out as an icon for the city’s coastline, which consequently marked the start of a series of developments to transform the area.

In order to match the identity of the project, Al Aman decided to create an equally unique energy center, through utilizing Tri-Generation. The expertise required to design and assemble the system was scarce in Saudi Arabia at the time, thus posing immense challenge and risk. Upon successful completion, this project became one of the very few in the country to apply this technology, and Al Aman had acquired the knowledge and experience in this highly specialized field.



Project Showcase
Head Quarter Business Park (BOOT)

Date
Oct. 2013 - 25 year contract

Key Parameters

Contract Type	BOOT
Duration	25 Years
Value	300M SAR
Scope of Work	Supply & installation of: <ul style="list-style-type: none">• 8 no. diesel generators – 2 MW each.• 3 no. electrical chillers – 1,400 TR• 3 no. absorption chillers – each 700 TR• 4 no. cooling towers• Saline water Reverse osmosis Plant 1,300 m3 per day• Design load 6.5 MWe and 4,300 TR cooling• Operation & Maintenance of the Power Plant + O&M for the Utilities

Project Specs

Generator		Cummins C2000D6 60Hz – 380 V – 1800 RPM
Type of Fuel		Diesel
Products	Power	14 MW
	Chilled Water	8,500 tons of Refrigeration – 380 V
	Hot Water	1,000 kWThermal
	Potable Water	1,500 cubic meters/day

Display of Work Done



Unloading the DAIKIN Electric Chillers



Mounting the DAIKIN Electric Chillers



Pump Hook-up



GRP Piping System for Water



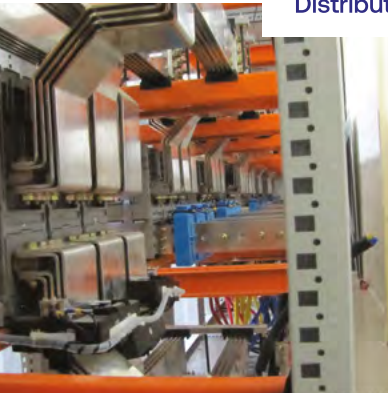
Hot Water Heat Exchangers



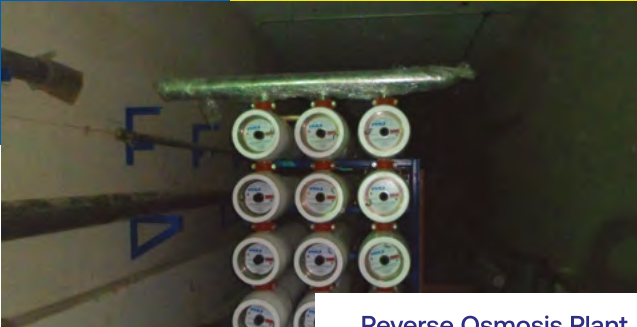
Cooling Tower



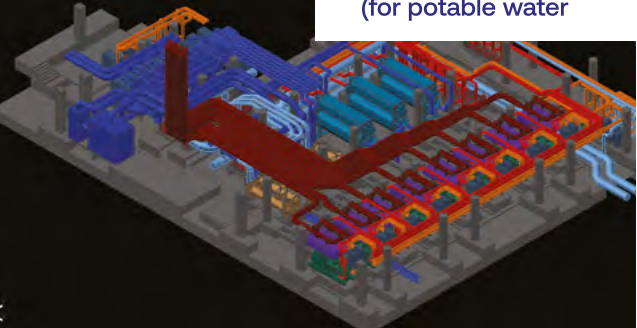
Exhaust Pipe Ducting + Cladding



LV Main Distribution Panel



Reverse Osmosis Plant (for potable water)



Generator Master Control Panel

Riyadh Park

Riyadh Business Park

Riyadh Park Mall represents a recent addition to Riyadh’s expansive array of leisure and business developments, which aim to unite a multitude of commercial traders and services under one roof. As a newcomer onto the already competitive market, Riyadh Park had to be exceptionally unique in order to gain an edge, thus defining the approach that Al Aman had to take when designing this project.

The applied solutions utilized Tri-Generation as in Headquarters Business Park, with the addition of the execution of all MEP services for Riyadh Park.



Project Showcase	Date
Riyadh Park Mall – BOOT ASALA Holding co.	Apr. 2017 – 31 year contract

Key Parameters

Contract Type	BOOT
Duration	31 Years
Value	567M SAR
Scope of Work	Chiller and power generation System: <ul style="list-style-type: none">• 12 no. diesel generators – 2 MW each.• 2 no. electrical chillers – 2,330 TR• 2 no. electrical chillers – 1,400 TR• 10 no. absorption chillers – 700 TR• 10 no. cooling towers• Saline water Reverse osmosis Plant 1200 m3 per day• Design load 16 MWe and 7,200 TR cooling• Operation & Maintenance of the Power Plant + O&M for the Utilities

Project Specs

Generator		Caterpillar 3516 60Hz – 13.8 kV – 1800 RPM
Type of Fuel		Diesel
Products	Power	12 MW
	Chilled Water	7,500 tons of Refrigeration – 4.16 kV
	Hot Water	1,000 kWThermal
	Potable Water	1,500 cubic meters/day

Display of Work Done



Caterpillar 3516
Gensets Installation



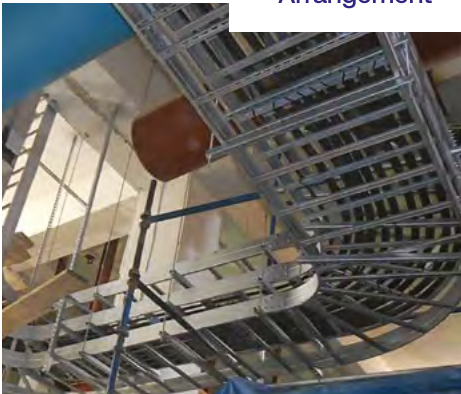
Cooling Tower
Arrangement



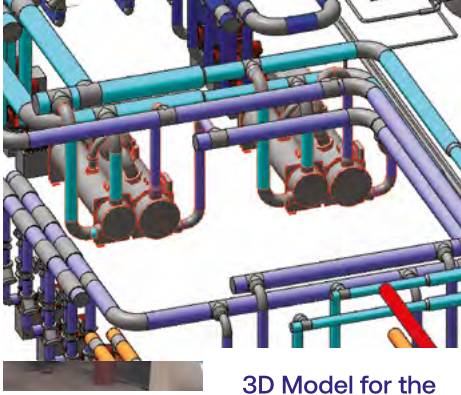
Electric Chillers
Hook-up Process



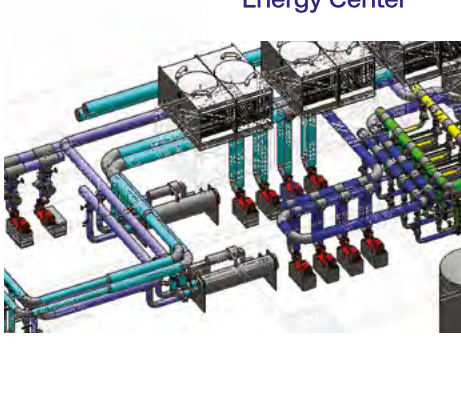
Cable Tray
Arrangement



Piping Layout
Post-Installation



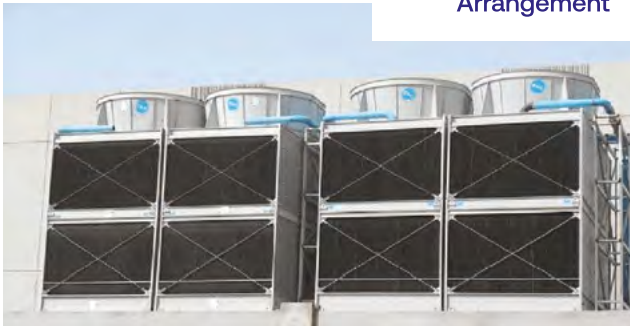
3D Model for the
Energy Center



Reverse Osmosis Plant
(for potable water)



Cooling Tower
Arrangement





Piping Layout
Post-Installation



LV Parasitic Load
(Designed & Manufactured
in Al Aman Factories)



“ Grounded in experience.
Fueling the **energy of tomorrow.**”



Services MEP

Our MEP division has existed since the establishment of Al Aman, specializing in power generation and electromechanical projects with vast experience and a diverse catalog of projects under its belt. Our projects include power generation, electrical transmission and sale, electrical and mechanical infrastructure, control and building services including HVAC, low current systems, firefighting and plumbing within the residential, commercial and industrial sectors.

Our qualified team of engineers and technicians specialize in assessment, evaluation and optimization of the clients' needs and we partner with internationally recognized firms to ensure that the latest technical developments and standards are included in our offerings.

HVAC

Delivering HVAC Solutions: Installing Centralized & Split AC, Ducting, Chillers, Cooling Towers, and More.



Plumbing

Providing Plumbing Solutions: Installing Potable Water Lines, Sewage Lines, Septic Tanks, Pumps and More.



Firefighting

Offering Fire Fighting Solutions: Installing Hydrants, Smoke Detectors, Flame Detectors, Fire Extinguishers, Foam Extinguishers, and More.



Electrical works

Executing Electrical Works whether for infrastructure or superstructure: Installing M.V. Cables, Transformers, Switchgear and other Panels, M.V. Substations, Low Current Systems, and More.



Power

Designing and providing energy solutions of various types based on client demand utilizing: Diesel Generators either Mobile or Fixed, Centralized Energy Centers using CHP, Hybrid Solutions etc.



Project Showcase	Date	Capacity	Fuel	Speed
Al Hada Hospital	2009	8 MW	Diesel	1800 RPM



Scope of work done

EPC



Project Showcase	Date	Capacity	Fuel	Speed
Taif Airport	2012	10 MW	Diesel	1800 RPM



Scope of work done

EPC



Project Showcase	Date	Capacity	Fuel	Speed
Madinah Printing Press	2008	8 MW	Diesel	1800 RPM



Scope of work done

EPC

Project Showcase	Date	Capacity	Fuel	Speed
HUTA/KAEC	2016	30 MW	Diesel	900 RPM



Scope of work done

EPC



Project Showcase	Date	Capacity	Fuel	Speed
AL Baiq-Aquat	2018	6 MW	Diesel	1800 RPM



Scope of work done

EPC



Project Showcase	Date	Capacity	Fuel	Speed
Jeddah Airport	2014	65 MW	Diesel	900 RPM



Scope of work done

EPC



Project Showcase	Date	Capacity	Fuel	Speed
UCIC (United Cement)	2017	54 MW	HFO/ Diesel	750 RPM



Scope of work done

EPC
Consortium with MAN Diesel, Germany



Project Showcase	Date	Capacity	Fuel	Speed
Sharma Nesma	2018	18 MW	Diesel	1800 RPM



Scope of work done

EPC
Industrial Sound Treatment



Project Showcase	Date	Capacity	Fuel	Speed
Jeddah Islamic Port	Ongoing	12 MW (Up to 18 MW)	Diesel	900 RPM



Scope of work done

EPC



Project Showcase

King Fahd University of Petroleum and Minerals

Date

Aug. 2022 - Sep. 2025



Scope of work done

Engineered discharge and intake sound attenuators achieving ultra-low noise levels of 65dBA at 1m.
Designed and fabricated a 2,000-liter double-skin daily fuel tank with advanced safety provisions.
Executed comprehensive acoustic insulation using high-grade Rockwool panels and perforated GI sheets.
Supplied and installed critical mufflers, exhaust systems, and fresh air ducts — over 160 meters of precision-engineered piping with insulation and cladding.
Installed axial intake fans delivering 44,000 CFM airflow for optimized generator performance.
Designed and fabricated custom generator enclosure with integrated mufflers, access doors, and noise reduction to 85dBA.

Project Showcase

Royal Saudi Navy

Date

Jul. 2024 – Jan. 2025 & Mar. 2025 – Oct. 2025

Scope of work done

Complete MV system modernization, including trench preparation, cable laying, splicing, and termination.
Decommissioning and replacement of outdated RMUs with new high-capacity units and custom-built foundations.
UPS system installation ensuring uninterrupted mission-critical power.
Replacement of legacy MDBs with advanced systems to enhance reliability and efficiency.



Project Showcase

General Directorate of Prisons

Date

June 2023 – Oct. 2024

Scope of work done

Supply & installation of powerful generators and Automatic Transfer Switches (ATS) (ranging from 400AMP to 1600AMP).
Complete LV cabling works and fuel storage systems.
Earthing systems for operational safety and resilience.
Installation of perimeter security fencing for enhanced facility protection.



Project Showcase

Saudi Water Authority

Date

Dec. 2023 – Oct. 2024



Scope of work done

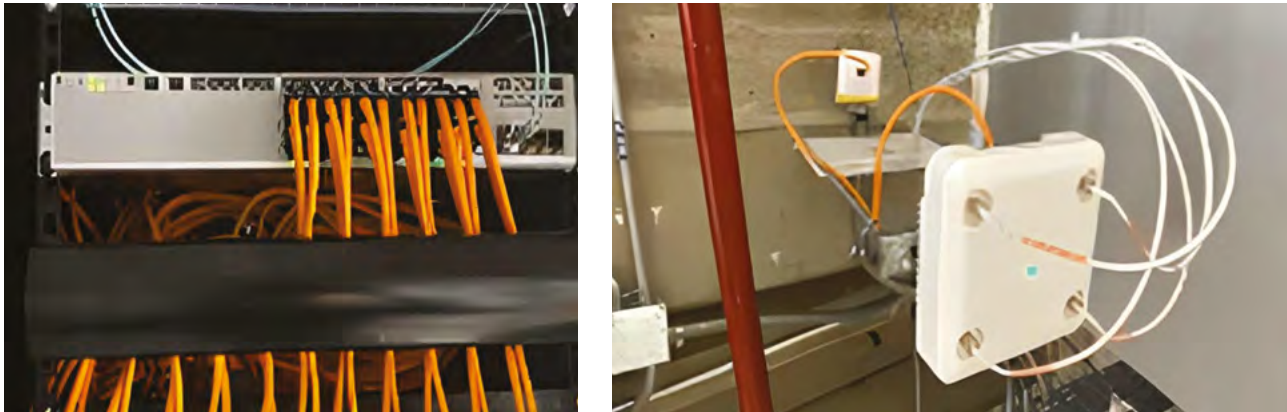
Supply of transformers built for durability and efficiency.
Comprehensive Site Acceptance Testing (SAT) to guarantee top-level performance, safety, and compliance.

Project Showcase

Golden Circle Company
(Private Hotel Contract – El Nozha) – Low Current System

Date

April 2024 – Dec. 2024



Scope of work done

CCTV systems ensuring 24/7 surveillance and security.
End-to-end networking solutions powering seamless hotel operations.
Public Address systems for safety, announcements, and guest engagement.

Services

Facility

Management

This division has existed since the establishment of Al Aman as the Operations & Maintenance division mainly specializing in generators and electrical equipment, which quickly expanded to include power plants and energy centers with all their auxiliary systems, and currently covers the entire scope of hard FM.

Our hard FM expertise in managing and operating facilities includes diesel and HFO generator power plants (LV & MV), LV and MV switchgear, transformers, control panels, synchronization panels and building services utilizing BMS including control systems, low current systems, HVAC equipment and plumbing.



Project Showcase

NCB (Various Sites, Kingdom-wide)

Date

2010 - Up to present



Scope of work done

Supply of Emergency Power, Including O&M of Diesel Generating Sets (Prime, Standby)
O&M for the Utilities

Project Showcase

Al Jazeera Palace

Date

2011

Capacity

12 MW

Fuel

Diesel

Speed

1800 RPM



Scope of work done

O&M for the power plant and its auxiliary systems and utilities.

Project Showcase

Ministry of Health – 100+ Hospitals

Date

2004 – Ongoing



Scope of work done

Maintenance services covering generators, transformers, UPS systems, and switchgears including ATS and SCADA. Scope extended to over 100 hospitals across the Kingdom. Ensured consistent availability of backup power for healthcare facilities.

Project Showcase
King Abdullah Financial District



Chilled Water Plant: 6x2,500 Tons water-cooled chillers. Total capacity 15,000 tons.



MV Cables (13.8 kV)



Chillers MV Switchgear (13.8 kV)



Power Plant Piping Layout



Cooling Tower



Cooling Tower

Project Showcase
King Abdullah Financial District



LAKOS Filtration System



SCADA & Control System

Project Showcase
Hajj Terminal



Chilled Water Plant. Total Capacity 60,000 Tons.



MV Cables (13.8 kV)



Cooling Tower



Power Plant Piping Layout

Project Showcase
Al Hada Military Hospital

Date
2006 - 2009



Firefighting Deluge System
Scope of work done



Firefighting Foam Bladder Tank

- Electrical work :
- Supply and installation of Medium voltage switch gear.
 - Transformer and low voltage switch gear, sub-stations, cable duct banks, street lighting, fire alarm system.
- Mechanical work :
- Supply and Installation firefighting system for all the hospital
 - Rentals of 4MW diesel generators
 - Operation & maintenance of power plant + O&M for the utilities.

Project Showcase
IKK – Taif Airport

Date
Oct. 2009 - April 2010



Firefighting Foam System Piping Layout
Scope of work done



HVAC System: AC Ductwork

- Electrical work :
- Supply and installation of Low voltage switch gear,
 - Transformer, cable duct banks, external lighting, fire alarm system.
- Mechanical work :
- Supply and Installation HVAC system
 - Supply and installation of fire fighting system.

Project Showcase
Soliman Fakeeh Hospital



Replacement of Main Distribution Panel



Ventilation System



Power: 4 MW inc. Ventilation System.



Project Showcase
Hafr Al Batin



6 MW inc. Ventilation & Auxiliary Systems



Industrial Sound Treatment

Project Showcase

ARAMCO KAUST

Date

June 2009 - April 2010



Scope of work done

- Electrical work :**
Supply and installation of Medium voltage switchgear,
Medium Voltage switchgear, Transformer, Sub-stations, cable
and duct bank, street lighting.
- Mechanical work :**
Installation of Diesel generator, installation of fire fighting for
security and safety building.

Project Showcase

HUTA / King Abdullah Port - KAEC

Date

Aug. 2013 - Aug. 2018



Scope of work done

- POWER RENTAL and MEP:**
Rental of 30MW diesel gensets:
Supply and installation of diesel generator with sound proof enclosure, fuel tank, fuel system.
Fuel loading and unloading for all tanks and generator
Supply and installation of fire fighting system.
Operation & Maintenance of the Power Plant + O&M for the Utilities

Project Showcase

SWCC Power Plant

Date

Jan. 2008 - June 2010



Scope of work done

- Electrical work:**
Supply and installation of Medium voltage SWGR, transformer cable and duct bank.
- Mechanical work:**
Supply and installation of diesel generator with weather proof enclosure, fuel tank, fuel system.
Fuel loading and unloading for main tanks 1000M3.
Connecting the two main tanks with fuel system for generator and firefighting system.
Make the extension of fire fighting system.
Operation & maintenance of 8MW power plant + O&M for the utilities.

Project Showcase

Ceramic Factory

Date

2006 - 2008



Scope of work done

- Electrical work :**
Supply and installation of all electric equipment and motors.
Supply and installation of building lighting and power.
Supply and installation of fire alarm system.
- Mechanical work :**
Supply and installation of fire fighting system including diesel pump and electrical pump,
valves, fire hydrant and fire pipe for all the factory.

Project Showcase

King Faisal University, Dammam



Scope of work done

Electrical work :

- Supply and installation of all electric material transformer substation, cable lighting.
- Supply and installation of street lighting and power.
- Supply and installation of fire alarm system.

Mechanical work :

- Supply and installation of HVAC system.
- Supply and installation of fire fighting system including diesel pump and electrical pump, valves, fire hydrant and fire pipe for all the factory.

Project Showcase

Al-Wajh Airport



Scope of work done

Electrical work :

- Supply and installation of Low voltage switch gear, Transformer, cable duct banks, external lighting, fire alarm system.

Mechanical work :

- Supply and Installation HVAC system.
- Supply and installation of fire fighting system.

Project Showcase

Jizan Airport

Date

Sep. 2009 - Jan. 2010



Scope of work done

Electrical work :

- Supply and installation of Low voltage switch gear, Transformer, cable duct banks, external lighting, fire alarm system.

Mechanical work :

- Supply and Installation HVAC system.
- Supply and installation of fire fighting system.

Project Showcase

Various Airports

Date

2013 - 2014



Scope of work done

Electrical work :

- Supply and installation of Low voltage switch gear, Transformer, cable duct banks, external lighting, fire alarm system.

Mechanical work :

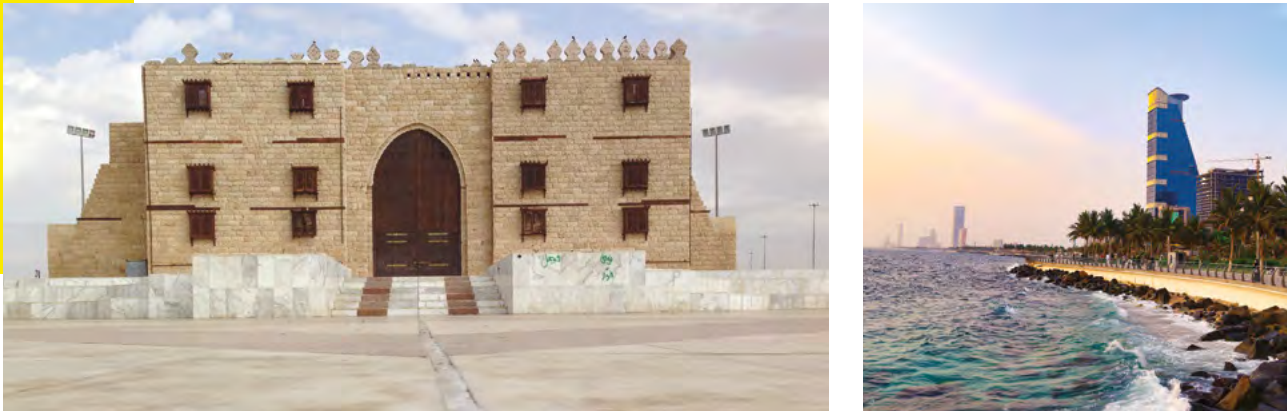
- Supply and Installation HVAC system.
- Supply and installation of fire fighting system.

Project Showcase

MPP – Dahban

Date

Feb. 2008 – Oct. 2014



Scope of work done

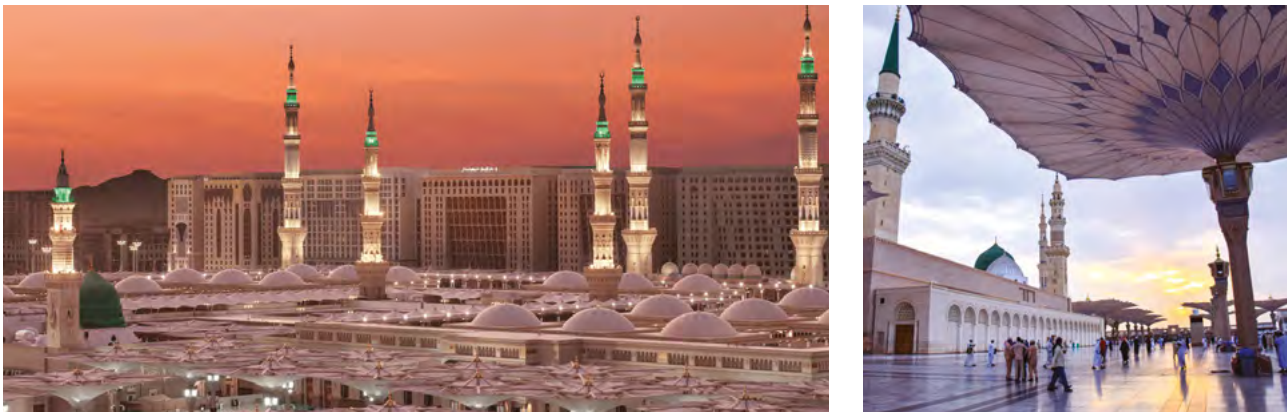
- Electrical work :**
- Supply and installation of Medium voltage switch gear, Transformer and low voltage switch gear, sub-stations, cable duct banks, street lighting, fire alarm system.
- Mechanical work :**
- Supply and Installation firefighting system.
 - Supply and installation of HVAC.
 - Installation work for two product line.
 - Operation & maintenance of 6MW power plant + O&M for the Utilities

Project Showcase

MPP – Madinah

Date

Jan. 2009 – Jul. 2009



Scope of work done

- Electrical work :**
- Supply and installation of Medium voltage switch gear, Transformer and low voltage switch gear, sub-stations, cable duct banks, street lighting, fire alarm system.
- Mechanical work :**
- Supply and Installation firefighting system.
 - Supply and installation of HVAC.
 - Installation work for all product line.

Project Showcase

SDMO

Date

Mar. 2008 – Sep. 2008



Scope of work done

- Electrical work :**
- Supply and installation of Low voltage switch gear, Transformer, cable duct banks, external lighting, fire alarm system.
- Mechanical work :**
- Supply and Installation HVAC system.
 - Supply and installation of fire fighting system.

Project Showcase

Clorox Factory

Date

2008 – Present



Scope of work done

- MEP and O&M**
- Operation & Maintenance of 8no. diesel generators – 1MW each.
 - Supply of completer exhaust system with silencers.
 - Supply of acoustic housing.
 - Supply of fuel/oil, water tanks.
 - All associated MEP integration and controls.

Project Showcase

KAEC - 28MW power plant (BOO contract)

Date

Nov. 2009 - 2015



Scope of work done

- POWER RENTAL and MEP:**
- Electrical work :**
- Supply and installation of Medium voltage SWGR, RMU, transformer cable and duct bank.
- Mechanical work :**
- Supply and installation of diesel generator with sound proof enclosure, fuel tank, fuel system.
 - Fuel loading and unloading for all tanks and generator
 - Supply and installation of fire fighting system.
 - Operation & Maintenance of the Power Plant + O&M for the Utilities

Project Showcase

Dana Mall

Date

April 2007 - Oct. 2009



Scope of work done

- POWER RENTAL and MEP:**
- Electrical work :**
- Supply and installation of Medium voltage switch gear. Transformer and low voltage switch gear, sub-stations, cable duct banks, street lighting, fire alarm system.
- Mechanical work :**
- Supply and Installation firefighting system for the entire Mall.
 - Supply and installation of HVAC.
 - Rentals of 8MW diesel generators
 - Operation & Maintenance of the Power Plant + O&M for the Utilities

Project Showcase

Aliat Mall

Date

Mar. 2008 - Sep. 2008



Scope of work done

- POWER RENTAL and MEP:**
- Electrical work :**
- Supply and installation of Medium voltage switch gear. Transformer and low voltage switch gear, sub-stations, cable duct banks, street lighting, fire alarm system.
- Mechanical work :**
- Supply and Installation firefighting system for the entire Mall.
 - Supply and installation of HVAC.
 - Rentals of 8MW diesel generators
 - Operation & Maintenance of the Power Plant + O&M for the Utilities

Project Showcase

Red Sea Mall - Temporary - Power Supply

Date

Dec. 2012 - Dec. 2017



Scope of work done

- MEP and O&M:**
- Supply, operation & maintenance of 28 no. diesel generators – 1MW each.
 - Complete exhaust system with silencers.
 - All acoustic housing.
 - All associated MEP integration and controls.
 - O&M for the Utilities.

Project Showcase

Azad – Souq 7

Date

Apr. 2022 – Jan. 2025



Scope of work done

- Supply, installation, and start-up of a rental power plant with a total capacity of 12 MVA at 13.8 kV, operating 24/7.
- Providing a qualified operating team to ensure continuous support and fulfill all tenant requirements throughout the contract period.

Project Showcase

Madinat Al Woroud – Taif

Date

Mar. 2023 - Ongoing



Scope of work done

- Supply, installation, and start-up of four (4) power plants, each with a capacity of 7 MVA at 13.8 kV, operating on a 24/7 basis.
- Provision of a qualified operation team to ensure continuous support, guarantee uninterrupted power availability to all villas, and promptly address any tenant requirements to avoid service interruptions.

Project Showcase

King Fahad Armed Forces Hospital

Date

Sep. 2024 – Ongoing



Scope of work done

- Operation and maintenance of standby generators with a combined capacity of 16MW.
- Scope included monitoring, servicing, and reliability testing.
- Ensured consistent availability of standby power for facilities.

Project Showcase

SSCL – King Abdulaziz Int’l Airport

Date

Sep. 2023 – Ongoing



Scope of work done

- Operation and maintenance of 30 Low Voltage mobile and stationary diesel generator sets.
- Operation and maintenance of 5 medium-voltage power plants.
- A total of 17 diesel generator sets, each rated at 2.5MW.
- Overall managed generation capacity: 42.5MW.
- Scope covered scheduled maintenance, troubleshooting, and operational support.



Services

Construction

Our construction division was established to create a full solution construction offering specialized in turnkey projects, as a full-service general contractor in commercial and residential and public buildings construction. Our project history under this division includes:

- Preconstruction Services
- Conceptual Budgeting
- Value Engineering
- Life-Cycle Analysis
- Scheduling
- Phase Analysis
- Estimating
- Design/Build Projects
- General Construction

Project Showcase	Location	Built up Area	Panda Expansion	Construction Cost
Dana Mall Expansion	YANBU (RC)	16,500 m ²	2,500 m ²	SAR 51,000,000



Project Showcase	Location	Panda Expansion
Jamea Plaza Expansion	Jeddah	9,000 m ²



“ Experience, innovation, and reliability. The pillars that drive every Al Aman project.

Project Showcase

United Cement Industrial Company (EPC)

Date

Jul. 2013 - Feb. 2017



Scope of work done

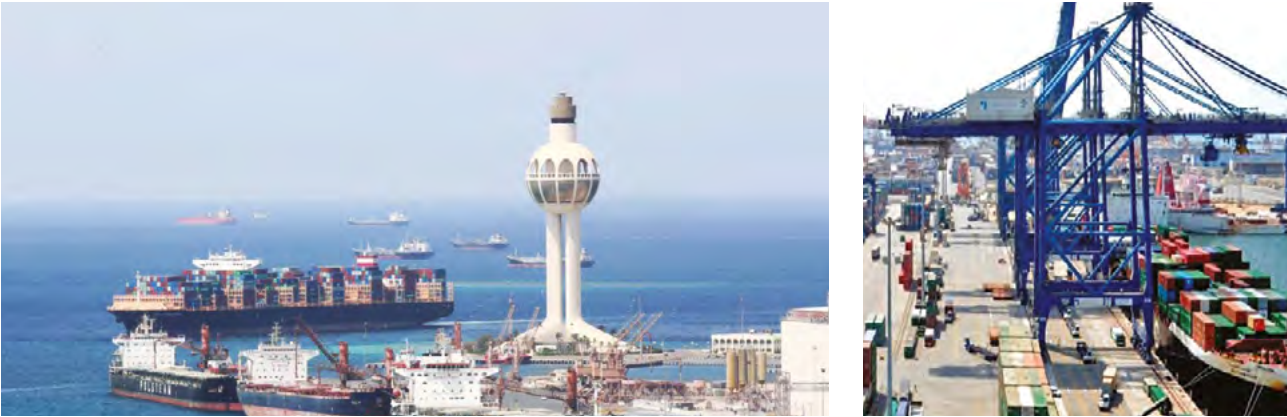
- Construction of 56MW Power Plant. - Civil Work:
- Construction of power house, maintenance platform, radiator plant, tank farm, pump house, workshop, outdoor facilities, drainage at site that includes: earthworks, Concrete works, supply and erection of steel structure steel materials, brickwork, plastering, painting, interior finishing, accommodation for personnel on site, mobilization and demobilization of site facilities.
- Electrical work:
- Panel installation, cable tray systems, equipotential bonding system, illumination design, outside earthing systems.
- Mechanical work required for the installation of the ff: Gensets, lube oil system, cooling system, supply and erection of intake air/exhaust gas systems (inside and outside power house), auxiliary systems – engine related, unloading and discharge systems, plant service and protection systems, piping and insulation works, fire fighting system.

Project Showcase

Jeddah Islamic Sea Port

Date

October, 2018



Scope of work done

- Turnkey Construction of 27MW Diesel Generator Power Plant.
- Design, Procurement, Construction, Test up & Commissioning Works

Project Showcase

Masharef Compound Jeddah, KSA

Date

Feb. 2014 - Sep. 2014



Scope of work done

- Residential building construction of phase-3 with a total built up area.
- 24,368 m² for 69 Villas.

“ The strength of a company lies in its **ability to evolve and adapt.**



Products

Al Aman Factory

Making the impossible possible

Al Aman Modern Factory was founded in 2004 for the main purpose of serving our clients’ finer specifications and reducing delivery times for projects, while adding value to the local market. Over the years, our product catalog has expanded and been finely tuned to fulfill various requirements in the engineering field, covering steel fabrications, power distribution panels and control systems, and industrial noise abatement.

Enclosures

Brief product information is provided below. Complete descriptions, specifications, and brochures are available on our website.



Type	Product	Use	Description
Power & MEP Enclosures	Steel Enclosures	Portable housing that can contain a variety of power generation & MEP systems for multi-application uses	We design and fabricate customized soundproof enclosures (70–85 dBA) for generators, chillers, pumps, and switchgears, including special applications like data centers, studios, and hospitals. Sound levels are tested with calibrated instruments both in factory and on site.

Auxiliary Systems & Accessories

Brief product information is provided below. Complete descriptions, specifications, and brochures are available on our website.



Type	Product	Use	Description
Exhaust Control	Exhaust Mufflers	Reducing exhaust noise level	Exhaust mufflers for industrial, residential, critical, super critical and hospital applications.
	Catalytic Converters	Controlling emissions	Connected to exhaust air to reduce carbon, unburnt fuel and NOx emissions.
Air Intake & Discharge	Fixed-type Louvers	Control amount & direction of airflow	Fixed type louvers made using aluminum, black metal or galvanized sheets complete with bird screen.
	Motorized Louvers	Open and shut airflows based on usage	Motorized louvers for versatile operating conditions, useful for cases such as protection of idle/standby enclosures or a fire.
	Sand Trap Louvers	Prevent sand and debris from passing	Sand trap louvers made using aluminum, black metal or galvanized sheets, for trapping sand and larger debris.

Auxiliary Systems & Accessories

Air Intake & Discharge	Sound Attenuating Louvers	Reducing noise created by direct airflow	Louvers enhanced with soundproof material, used for fresh air intake or discharge to achieve the required noise level.
	Sand Trap Filters	Trapping of very fine debris within airflow	Fine mesh filters based on application, to prevent the passage of fine debris.
Noise Control	Acoustic Panels	Reducing noise levels through walls & ceilings	Soundproof panels for walls and ceilings to achieve the required noise level for enclosures, power plants, central air conditioning and air compressors plants.
	Acoustic Doors	Reducing noise levels through doors	Sound attenuated doors for industrial and commercial uses to achieve the required noise level.
Water Cooling	Radiators	Cooling generators to maintain std. operating temp.	Remote radiators (vertical or horizontal) equipped with electrical motors with IP 65, outdoor type with low noise level for generator water cooling systems.
Firefighting	Enclosure Firefighting System	Fire protection within confined spaces	Firefighting systems in compliance with NFPA and civil defense requirements to fit our enclosure applications.

Tanks

Brief product information is provided below. Complete descriptions, specifications, and brochures are available on our website.



Type	Product	Use	Description
Industrial	Carbon Steel Tanks	Store industrial fluids such as oil, fuel, water	We design and fabricate carbon steel tanks (underground/overground, cylindrical/rectangular, single/double-skin, vertical/horizontal) with thickness based on capacity and pressure. Tanks include epoxy coating, RAL finish, and all accessories such as pumps, valves, meters, heaters, and safety systems.
Food Grade	Stainless Steel Tanks	Store food materials such as grain, potable water etc.	We design and fabricate cylindrical stainless-steel tanks (304 or 316) for storing potable water, milk, grain, and more. Tanks are fitted with nozzles, treated for durability, and finished with a smooth surface.

Switchgear & Electrical Panels

Brief product information is provided below. Complete descriptions, specifications, and brochures are available on our website.



Type	Product	Use	Description
Switchgear	Automatic Transfer Switch (ATS)	Automatically switch between primary and backup power sources when needed to maintain continuous supply.	This product supports switching between two or three power sources, such as generators, grid feeders, or synchronizing panels, using standard circuit breakers available up to 6300 Amps.
	Synchronizing Panels	Synchronizes and unifies the operation of several generators in parallel as a cohesive unit.	We fabricate synchronizing panels for generators with different speeds, voltages (low or medium), and control modules. Panels include outgoing feeders as requested, using circuit breakers up to 6300 Amps.
	Main & Sub Distribution Panels (MDP/SDP)	Regulate the distribution of electric power to all connected systems based on load criteria.	Panels are fabricated using Schneider circuit breakers up to 6300 Amps with Prisma or Block Set enclosures. Other brands can be used as required, with testing per Schneider Electric procedures.
Control Panels & SCADA	Motor Control Center Panels (MCCP)	Provide centralized control and protection for all electric motors within connected systems.	Panels control all building motors, including commercial centers, power plants, and HVAC systems, with complete logs for each motor. Fabricated using Schneider, Siemens, ABB, or approved equivalent components.
	Pump control panels	Provides centralized control and protection for all connected pumps.	Controls all system pumps, programmed per each system's operation and providing complete logs for each pump. Fabricated using Schneider, Siemens, ABB, or approved equivalent components.
	SCADA & PLC Panels	Purpose of SCADA is to sense, monitor and coordinate. Purpose of PLC is to command and control.	Panels monitor and control all building systems, including commercial centers, power plants, and HVAC, providing detailed data via sensors and HMI terminals, with AI-enabled maintenance scheduling. Fabricated using Schneider, Siemens, ABB, or approved equivalent components.
	Load Banks	Testing power sources (e.g. generators) by applying load conditions.	Design and fabrication of load banks operating manually or via PLC, allowing retrieval of all parameters including load, voltage, current, power factor, and speed. Used for load testing generators up to 3000 kW/400 V, UPS, and central battery systems.

Switchgear & Electrical Panels

Control Panels & SCADA	Automatic Power Factor Correction Panels (APFC)	Improve the power factor in electrical systems to boost efficiency and reduce consumption.	APFC panels reduce load fluctuations and reactive power to lower energy costs, using capacitors connected to main distribution panels. Suitable for buildings, malls, and factories with low power factors, they can be integrated with BMS and powered by AI.
	Panels for Pre-paid kWh meters	Control electrical consumption and thus electrical bills/budgets.	Design and fabrication of panels with pre-paid kWh meters, enabling control and monitoring of electrical consumption. Applications allow users to track usage, pay bills, and recharge meters based on need or budget.
	Panels for BTU meters	Measure the consumption of chilled water for Air conditioning.	Design and fabrication of control panels for BTU meters to measure chilled water consumption via flow, temperature difference, and specific heat. PLC programming calculates tenant usage and issues monthly bills, with an application for monitoring and payment.
Mobile Hybrid Solar System		A mobile power solution that combines sustainability and efficiency.	Design and fabrication of hybrid solar energy systems with solar modules, hybrid inverter, lithium-ion batteries, and diesel generator, housed in an IP55-rated cabinet. The portable, containerized system ensures reliable performance and easy deployment across diverse environments.

Generators

Brief product information is provided below. Complete descriptions, specifications, and brochures are available on our website.



Type	Product	Use	Description
50 Hz		Used to generate electricity by burning diesel fuel and gas or biofuel if required.	Assembly of diesel generator sets with engines, alternators, and DSE controllers, rated 20 kVA–1650 kVA (50 Hz) at 231/400 V. Available in open or enclosed steel configurations, using core components from Baudouin, Faraday, and DSE.

Transport Trucks

Brief product information is provided below. Complete descriptions, specifications, and brochures are available on our website.



Type	Product
Logistics Transport Equipment	Trailers
Heavy-Duty Hauling Units	Tankers

“ We don’t just build solutions. **We engineer progress.** ”

Project Showcase

RPA - NESMA

Date

May. 2018 - Aug. 2018



Scope of work done

INDUSTRIAL – NOISE TREATMENT FOR GENERATOR ROOMS
Supply and Installation of Sound Treatment for Generator Rooms for Central Utility Unit of Sharma Palace.

Project Showcase

Saudi Binladin

Date

Dec. 2013 - Mar. 2014



Scope of work done

INDUSTRIAL – DUCT FACTORY
Supply & delivery of galvanized single and double wall rectangular duct for Haram Expansion – Makkah.

Project Showcase

Cummins

Date

2010 - Up to Present



Scope of work done

Supply and Installation of Sound Treatment for Generator Rooms and accessories for Riyadh Metro, Samsung, etc...

“ Your partner in
reliable and **advanced**
engineering.



Future Potential

A Construction division was established to create a full solution construction entity specialized in turn key projects. A full service general contractor in commercial and residential and public buildings construction. We offer traditional general contracting services as well as design/build complete range of services including:

“ Innovating to
energize the
future.

Certifications



“
Engineering
the Path to
Sustainable
Growth.”

[illegible]

**CERTIFICATE
OF REGISTRATION**

This is to certify that Quality Management System of

AL AMAN MODERN ENERGY COMPANY LIMITED

8357 King Abdull Aziz Branch Rd 2197 An Nahdah Dist. 23523 Jeddah
Kingdom of Saudi Arabia

is in accordance with the requirements of the following standard

ISO 13485:2016

(Medical Devices - Quality Management System)

SCOPE

**Selling, Installing and Maintaining
Medical Devices**

Certificate Number : 211123069632

To verify certificate, visit at
www.uafacecreditation.org
www.iafcertsearch.org

Initial Registration Date : 21-Nov-2023
1st Surveillance Date : 21-Oct-2024
2nd Surveillance Date : 21-Oct-2025
Certificate Expiry Date : 20-Nov-2026

Accreditation No. : 51901390123

Issued by ARS

Abdulrahman
Managing Director



ACCREDITED
UNITED ARAB EMIRATES
UAF
CERTIFICATION



ISO 9001:2015
CERTIFIED



INTERNATIONAL
IAF
REGISTRATION



UAF Address : 400, North Center Dr, STE 202, Norfolk, VA 23502, United States of America :

CERTIFICATE OF REGISTRATION



SISTEMA
Certifications and Inspections

MANAGEMENT SYSTEM CERTIFICATE

This is to certify that the Management System of the

AL AMAN MODERN ENERGY CO. LIMITED

3995 Ilyiah Abu Madi - Al Hamra Unit No. 1, Jeddah 23324-7469, Zip Code: 23324
Additional Number: 7469

Has been assessed and found to be in Compliance with the requirements of
Standard detailed below

ISO 9001:2015

Quality Management System

This certificate is valid for the following Services

Electric power generation, transmission, distribution, wholesale and retail sale
Construction of all types of residential buildings and non-residential buildings,
Construction of sewer systems, sewage disposal plants, pumping stations and
electric power stations, Installation and maintenance of fire alarm devices,
fire equipment and solar energy collectors, Organization and operation of
exhibition and conference centers and catering for Hajj and Umrah

Certificate No.: SISTEMA/0822/KSA-ALQ2623

Re-Certification due on: 14.07.2025

Initial Issue: 14.05.2022

Issue Date: 29.07.2024

Expiry Date: 13.08.2025

Verify the certificate: www.systemacerts.com



IAF
INTERNATIONAL
ACCREDITED
BODY



IAS
INTERNATIONAL
ACCREDITED
SERVICE



Managing Director



The signatories of this document are subject to the rules and regulations of the relevant standard body. This certificate is valid for the duration of the registration period. The validity of this certificate is subject to successful completion of surveillance audits as required by the standard body. This certificate is valid for the duration of the registration period. The validity of this certificate is subject to successful completion of surveillance audits as required by the standard body. This certificate is valid for the duration of the registration period.

[illegible]

CERTIFICATE OF REGISTRATION



SISTEMA

Certifications and Inspections

MANAGEMENT SYSTEM CERTIFICATE

This is to certify that the Management System of the

AL AMAN MODERN ENERGY CO. LIMITED

3995 Ilyiah Abu Madi - Al Hamra Unit No. 1, Jeddah 23324-7469, Zip Code: 23324
Additional Number: 7469

Has been assessed and found to be in Compliance with the requirements of
Standard detailed below

ISO 14001:2015

Environment Management System

This certificate is valid for the following Services

Electric power generation, transmission, distribution, wholesale and retail sale
Construction of all types of residential buildings and non-residential buildings,
Construction of sewer systems, sewage disposal plants, pumping stations and
electric power stations, Installation and maintenance of fire alarm devices,
fire equipment and solar energy collectors, Organization and operation of
exhibition and conference centers and catering for Hajj and Umrah

Certificate No.: SISTEMA/0822/KSA-ALE2624

Re Certification due on: 14-07-2025

Initial Issue: 14-08-2022

Issue Date: 29-07-2024

Expiry Date: 13-08-2025

Verify the certificate: www.sistemacerts.com



INTERNATIONAL
IAF
FORUM



IAS
ACCREDITED
INSTITUTION

INC-0015



Managing Director

The Organization's documentation and implementation has been reviewed and found conformity with the selection standard rules. This certificate of Registration is based on the evaluation of the documented scope and also responsible for maintaining the responsibilities of the relevant standard rules. If any changes in the activities of the company, this certificate must be withdrawn or modified to reflect the changes. The certificate holder must comply with the requirements of the standard and maintain the certificate validity. The certificate holder must comply with the requirements of the standard and maintain the certificate validity.

CERTIFICATE OF REGISTRATION



SISTEMA

Certifications and Inspections

MANAGEMENT SYSTEM CERTIFICATE

This is to certify that the Management System of the

AL AMAN MODERN ENERGY CO. LIMITED

3995 Ilyiah Abu Madi - Al Hamra Unit No. 1, Jeddah 23324-7469, Zip Code: 23324
Additional Number: 7469

Has been assessed and found to be in Compliance with the requirements of
Standard detailed below

ISO 45001:2018

Occupational Health & Safety Management System

This certificate is valid for the following Services

Electric power generation, transmission, distribution, wholesale and retail sale
 Construction of all types of residential buildings and non-residential buildings,
 Construction of sewer systems, sewage disposal plants, pumping stations and
 electric power stations, Installation and maintenance of fire alarm devices,
 fire equipment and solar energy collectors, Organization and operation of
 exhibition and conference centers and catering for Hajj and Umrah

Certificate No.: SISTEMA/0822/KSA-ALO2625

Re-Certification due on: 14.07.2025

Initial Issue: 14.08.2022

Issue Date: 29.07.2024

Expiry Date: 13.08.2025

Verify the certificate- www.sistemacerts.com



INTERNATIONAL
ASSOCIATION
OF
FEDERATIONS



INTERNATIONAL
ASSOCIATION
OF
SPECIALISTS



Managing Director

(The Organization's documentation and implementation has been reviewed and found to comply with the relevant standard rules. This certificate of Registration is based on the evaluation of the documented scope and also responsible for maintaining the requirements of the relevant standard rules. If any changes in the activities of the company, this certificate could be withdrawn or suspended in order to keep it up-to-date. It is recommended to renew the certificate every three years. The client and its staff shall follow normal certificate rules (maintenance fees, etc.).

Certifications





Certified Vendor



أرامكو السعودية
saudi aramco



“ Powering
progress through
innovation.”

Key Suppliers



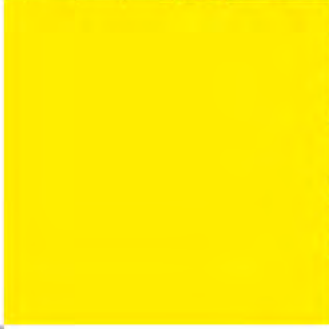
Our Clients

Private



Government





“ Making the Impossible Possible.



(966) 12 667 4238
enquiry@alamancompany.com
Al Aziziyah District

    /alamansaudi
www.alamancompany.com